

2021...A YEAR IN REVIEW



President's Message

It's been a busy year! Our fieldwork in 2021 centered on completing projects in Thomas N Hayes Ecological Park with a minor amount of work at Mt Rose Swanson.



In this issue:

PRESIDENT'S MESSAGE	1
JOIN US	1
THOMAS HAYES ECOLOGICAL PARK	2
MT ROSE SWANSON	3
OTHER TRAILS	4
TRAIL COUNTERS	5
COMMUNITY OUTREACH	6
MISCELLANEOUS	6
GOALS FOR 2022	6

We provided input to the Armstrong Spallumcheen Trails Master Plan, the Spallumcheen Trails and Cycling Active Transportation Network Plan, the Township of Spallumcheen's Select Committee and to development referrals for the City of Armstrong. Our community outreach in 2021 consisted of promoting ourselves at the Armstrong Farmers Market and the Pumpkin Festival.

ASTS Memberships

We are a non-profit society that relies on people such as yourself to support our initiative and maintain local trails. Please consider taking out a membership and helping us continue our work.

Yearly membership rates are:
 Single \$10
 Family \$25

The ASTS was successful in obtaining funds from CN Railway, which will go towards projects on Mt Rose Swanson in 2022. In addition, trail counters were purchased and installed at major trailheads to collect data on the amount of use our local trails are receiving.

Board of Directors for 2022

Officers

- President Marge Sidney
- Vice President Ken Chapman
- Secretary Suzie Sims
- Treasurer Pat Brinnen

Directors at Large

- Ron Brinnen
- Glenn Gytenbeek
- John Irving
- Jill de la Salle

We look forward to a 'gentler' 2022, an increase in membership to help us with projects and many accomplishments!

Marge



Purchase your memberships through the "Join Us" tab on our website or email us at astrailsociety@gmail.com

Website www.astrailsociety.com



@armstrongtrails

Thomas N Hayes Ecological Park

We accomplished many projects in the Park in 2021; new trail construction, the Otter Lookout walkway, completed the kiosk, refurbished the outhouse, improved the drainage on the access easement as well as a work-bee to celebrate BC Trails Day.

The new Otter Lookout Trail was finished in April, complete with a raised walkway over a seasonal drainage, a viewpoint was cleared and a bench installed to view Otter Lake and beyond. In addition, the new Chickadee Way trail was constructed to provide a shortcut to the junction of Chipmunk Cutoff and Whitetail Wander. During the spring a portion of Coyote Loop to this junction is very muddy so we hope this provides an alternate route.



As this is an Ecological Park it was felt that as many features as possible should be on display on the kiosk; the latest map with the new trails, panels on the Flora, Fauna, Trees and History as well as a notice board. The foundation and frame for the kiosk were built in 2020 and the panels were installed in 2021.



The 33 yr old outhouse in the Park was sitting on the ground and in the winter this created a problem as the door couldn't be easily opened. We raised it up onto 6" X 6"s to prevent further deterioration of the walls and built a new roof with an overhang.



The farmer, who sub leases the land along the access easement, fenced the R/W this past fall to keep people and dogs off his crop. There is a low spot along the access and during snowmelt hikers would divert onto the farmland to avoid the water

and mud. With the fence in place it would confine people to wade through the flooded area next spring, so improved drainage was necessary. In September, the neighbour to the north permitted us to install a pipe under his driveway allowing water to drain away over his field. Another neighbour provided his backhoe. Special thanks go to **Glen Kalin** for allowing us to divert the water to his land and to **Derrick Jahn of Matrix Excavation** for the use of his backhoe.



BC Trails Day is a Provincial event hosted by the Outdoor Recreation Council and June 5th, 2021 was the very first one. We participated by organizing a work-bee. Sections of Coyote Loop and Chipmunk Cutoff trails were levelled that were sloping sideways and very treacherous in muddy and icy conditions. We also installed 3 posts with trail junction maps and weed wacked burdock. Thanks to all the volunteers!

Glenn & Ken



Mt Rose Swanson

Peter Rotzetter's Bench

Jolanda Rotzetter requested that donations in memory of Peter be made to the Trails Society. Thanks to the public we collected a total of \$1,327.75 and decided to buy a durable bench, compose a plaque and install them at a semi-secluded viewpoint near the tower on Rose Swanson. We contacted Jolanda once installation was complete as we wanted to take her and others to this location for a dedication. Thanksgiving Monday was the date chosen and 15 of us hiked to the bench, had a toast in Peter's honour, told stories, shared some laughs and had lunch. Five eagles soared above us as we admired the view. A very fitting tribute!



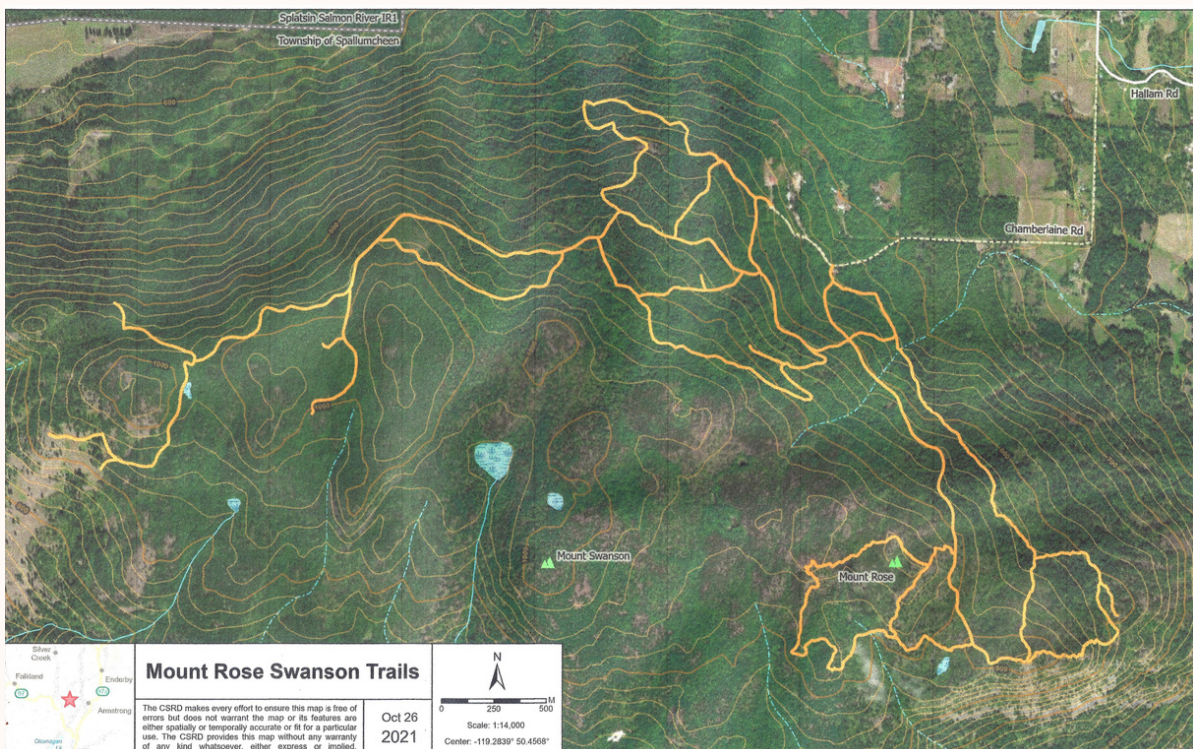
Chip Sidney Plaque

This plaque was something we talked about for some time. Gordon 'Chip' Sidney built the first trail on Rose Swanson, to Miller's Bluff in 1966/67. He then led 300+ people up there to show off the great view and celebrate Canada's Centennial. We decided this needed to be recognized. This plaque was installed on a piece of bedrock at Miller's Bluff in October.
Ran N. Ken & Glenn



Rose Swanson Trails

This preliminary map will be used as a starting point and we will add items such as trail names, features and amenities. The ASTS received \$9,287.00 from CN Railway and that money will go towards constructing 2 kiosks (one in the main parking lot and one at the end of Chamberlaine Road). The kiosks will have the completed map and panels on the flora, fauna, history and acknowledgements. Trail junction maps will be located on the main well used trails. This project will be completed by the end of Dec 2022.



Other Trails

City Loop Trail

In 2020 a presentation was made to City Council on the desirability of a loop trail around town. This was once in existence but over the years has fallen by the wayside. Upon further investigation of the legalities of crossing private lands we feel that lease agreements between landowners and the City are necessary. Leases need to be signed before signage goes up and the trail is promoted. Routing could change depending on discussions with various landowners. We want to work with the City in 2022 to move forward on this project. The drawing shown is a preliminary plan.

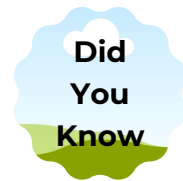
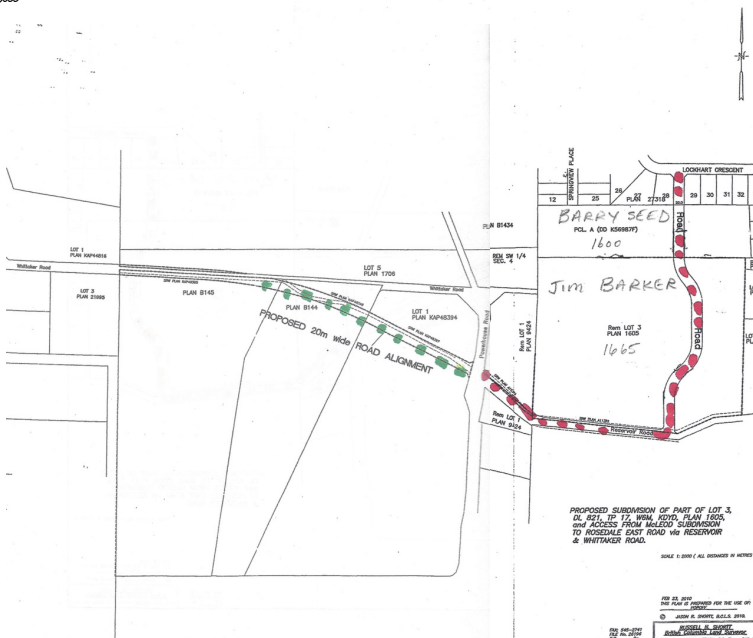


Ker

McLeod Subdivision to East Rosedale route

The phase that the ASTS has been working on is the proposed bike lane/walkway and road going from Lockhart Cres to Reservoir Rd. This route would pass through 2 private properties and both landowners are agreeable, with certain conditions. We volunteered to collect public input for this proposal and submit it to the Township. Two Board members along with Tammy and Ray Nedellec from the McLeod Subdivision set up an information tent July 17th at McLeod Park. 102 surveys were submitted to us and all were in favour. In addition we also requested and received letters of support from Ribbons of Green, the Vernon Outdoors Club, Interior Health and the Shuswap Trail Alliance. We have taken this project as far as we can at the moment and the next steps are in the Township's hands.

Jill



The ASTS constructed 610 meters of new trail in Thomas Hayes Ecological Park

Trail Counters

Little is known about the amount of use on our local trails so the ASTS purchased 4 trail counters and installed them at the end of July.

One is located at Thomas Hayes and the other three are on Rose Swanson - one each at the beginning of the two trails at the main parking lot and the other is at the end of Chamberlaine Rd. We download them at the end of each month and now have 5 months of user data.

The numbers have blown us away and are as follows:



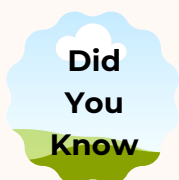
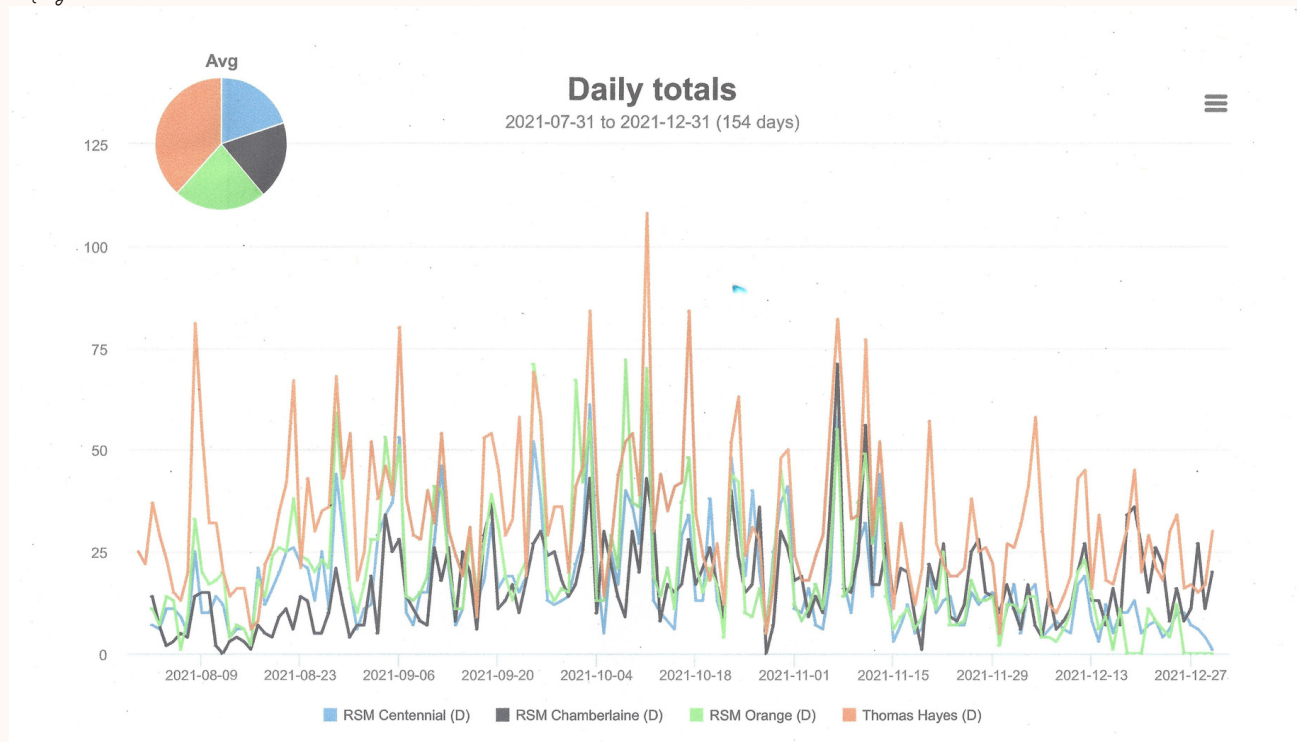
	Mt RS Main trails	Mt RS Chamberlaine Rd	Thomas Hayes
August	1,006	225	978
September	1,462	560	1,153
October	1,715	665	1,257
November	966	599	940
December	<u>473</u>	<u>465</u>	<u>789</u>
Totals	5,622	2,514	5,117

Total use on Mt Rose Swanson for 5 months = 8,136

Total use at Thomas Hayes Ecological Park for 5 months = 5,117

The peak month of use so far was October and the peak single day use was Thanksgiving Monday. Even with the wildfire smoke the numbers are high. As to be expected the peak use is on weekends and holidays, between 10 am and 3 pm.

Marge



The ASTS donated 1.114.75 hrs to our local communities for a total in-kind value = \$33,950.00

Community Outreach

We had a booth at 3 Farmers Markets and the Pumpkin Fest in 2021. It's important for us to reach out to the public and promote ourselves. Maps were a hot item and we have found that these events are our most successful way of selling memberships and ASTS T-shirts.

Pat



Miscellaneous

In 2020 and 2021 the ASTS developed a 'Wish List of Trails' for both the Township of Spallumcheen and the City of Armstrong. This input was provided and used in the development of the Armstrong Spallumcheen Trails Master Plan and the Spallumcheen Trails and Cycling Active Transportation Network Plan. People want more trails. We hope that some of our suggestions will come to fruition in the future to enlarge our trail network and spread out use.

The ASTS had a seat on the Township of Spallumcheen's Select Committee and helped set up a User Survey for Rose Swanson. Out of that came a list of recommendations, which were adopted by Council. The Select Committee will hopefully resume meetings in Feb 2022 to further the planning on Mt Rose Swanson and start reviewing other areas.

Goals for 2022

Mt Rose Swanson

- Construct 2 kiosks (main parking lot & end of Chamberlaine Rd), design/install panels (map, history, flora, fauna, recognition)
- Install mini maps at all trail junctions on main set of trails
- Ongoing data collection from the Trail Counters
- Improve seasonally wet Orange trail at parking lot
- Continue pursuing trail recognition with the Province

Thomas Hayes Ecological Park

- Ongoing maintenance
- Ongoing data collection from the Trail Counter

City Trails

- Continue to pursue/promote the City Loop Trail & create signage
- Work with City on potential Royal York trails

Township Trails

- Continue planning for the connection between the McLeod subdivision & the City

Continue dialogues/meetings/partnerships

- City of Armstrong & Township of Spallumcheen
- Township Select Committee
- Shuswap Trail Alliance
- Sicamous to Armstrong Rail Trail